

z



ne

e

PORT
FOLIO

EFFICIENCY IS IN THE SIMPLICITY

We have a reputation for simplifying the complex while delivering innovative and sustainable solutions that meet your specific needs and within your budget.



TABLE OF CONTENTS

INTRO

DESIGN AND INNOVATION

HISTORY MUSEUMS

ACADEMY MUSEUM
OF MOTION PICTURES

NATIONAL MUSEUM
OF THE AMERICAN INDIAN

MUSEUM OF INDIAN ARTS
AND CULTURE

NATIONAL CENTER FOR CIVIL
AND HUMAN RIGHTS

CANADIAN MUSEUM
OF NATURE

NATIONAL MUSEUM
OF NATURAL HISTORY

THE FIELD MUSEUM

AL SHINDAGHA MUSEUM

SOUTHERN UTE CULTURAL CENTER
AND MUSEUM

ART MUSEUMS

NORTON MUSEUM OF ART

DENVER ART MUSEUM

PEABODY ESSEX MUSEUM

JORDAN SCHNITZER MUSEUM
OF ART

MUSÉE NATIONAL DES BEAUX-ARTS
DU QUÉBEC

UNIVERSITIES & LIBRARIES

ALASKA STATE LIBRARY
ARCHIVES MUSEUM

LILLY LIBRARY,
INDIANA UNIVERSITY

GEORGIA UNIVERSITY

HILL MUSEUM
AND MANUSCRIPT LIBRARY

YALE UNIVERSITY
ART GALLERY

HARVARD MUSEUM
OF NATURAL HISTORY

ATTRACTIONS

WALT DISNEY IMAGINEERING

TOYOTA EXPERIENCE CENTER

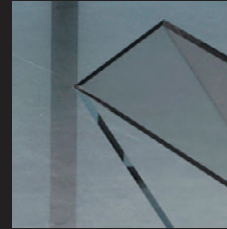
EMPIRE STATE BUILDING

GREEN BAY PACKERS

HALL OF FAME AND MUSEUM

BANFF CENTRE FOR ARTS
AND CREATIVITY

FORD EXPERIENCE CENTER



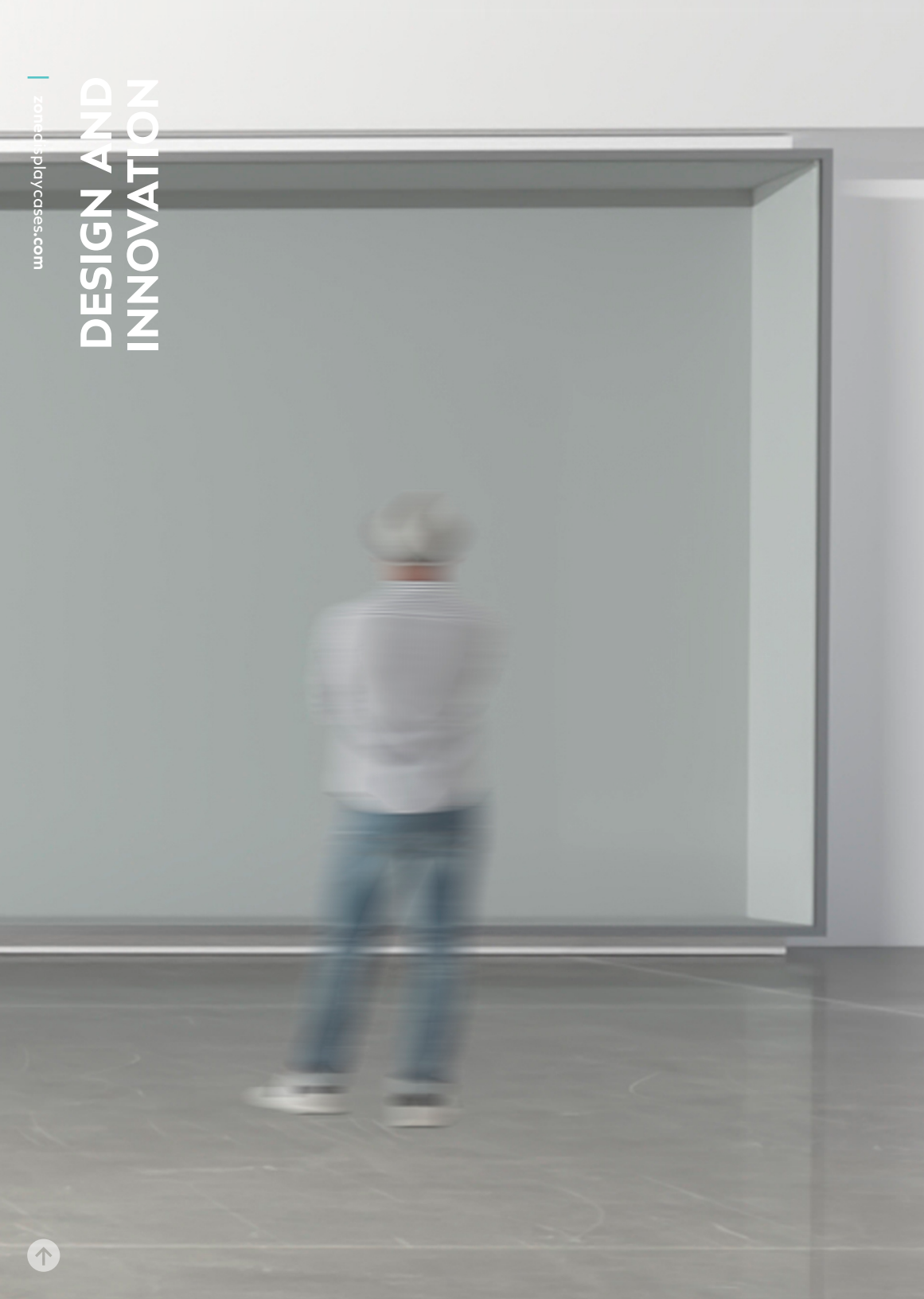
DESIGN AND INNOVATION

DESIGN AND INNOVATION



DESIGN BY ZONE DISPLAY CASES
Table case (2021)





GOOD DESIGN FOR A MUSEUM DISPLAY CASE: PUSHING THE LIMITS OF MINIMALISM AND FUNCTIONALITY

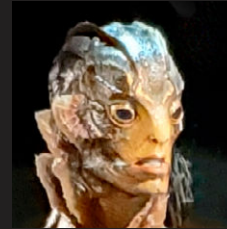
Behind each display case hides a team of artisans, each of whom collaborates in the creation of this innovative and distinctive display case with fine and clean lines. Every detail is meticulously thought out. We are looking to create this unobtrusive glass enclosure that will subtly disappear into its environment, highlighting none other than the valuable object on display.

Architects and exhibit designers all dream of this invisible display case which utopically fulfills its core functions in terms of protection and conservation.

Despite the environmental issues, we strive to minimize the structure and refine the lines. We yearn for that moment when the object on display will simply float in the void, without any visual obstruction. We focus on the smallest details to eliminate all distractions and we seek simplicity that will give the objects the space to breathe. In doing so, we allow for the objects of real value to shine the brightest.

Without compromising durability and functionality, and while increasing the performance of the product, we strive to reduce the steel structure and hide the mechanics to give greater importance to the glass. By concealing or recessing the structure, we obtain this "floating"-looking display case with a surprising, bold and ultra-minimalist design, which nevertheless aims to redirect all attention towards the valuable objects that are being displayed.

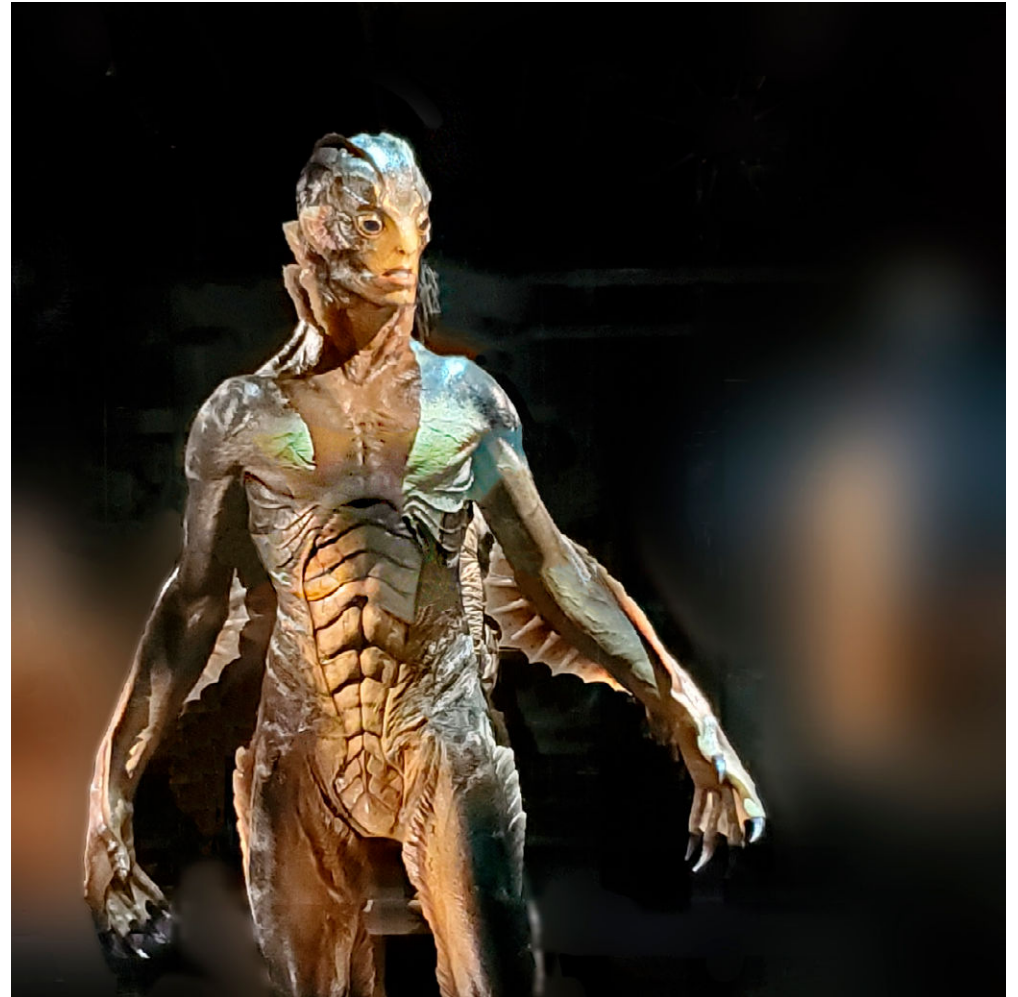




HISTORY MUSEUMS



ACADEMY MUSEUM OF MOTION PICTURES



ACADEMY MUSEUM OF MOTION PICTURES
The amphibian man suit from Guillermo del Toro's
movie *The Shape of Water* (USA, 2017).





THE ACADEMY MUSEUM OF MOTION PICTURES

| | |
|---------------------------|--------------------------|
| Architect | Renzo Piano |
| Collection | Cinema-Related Artifacts |
| Designer | wHY Architecture |
| Exhibit Fabricator | Cinnabar California Inc. |

2021 Los Angeles, CA, USA



ABOUT _ Located in Los Angeles, the 300,000 sq. ft. museum is a 484 million dollar project that combines the renovation of an existing building originally built in 1939 with the creation of a state-of-the-art spherical building made of glass and cement overlooking the Hollywood Hills.

Among the firms involved in this large-scale notorious project, Zone Display Cases was commissioned to design, fabricate, and install some 130 custom-made conservation cases to display and protect some of the greatest cinema-related collections.



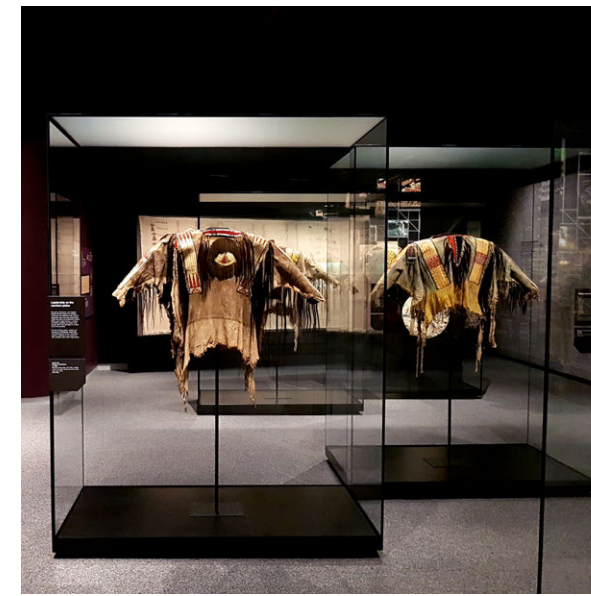
NATIONAL MUSEUM OF THE AMERICAN INDIAN



NATIONAL MUSEUM OF THE AMERICAN INDIAN

| | |
|---------------------------|------------------------------|
| Exhibition | Americans |
| Designer | Studio Joseph |
| Exhibit Fabricator | Capitol Museum Services |
| Collection | Leathers, Feathers and Beads |

2019 Washington, D.C., USA



ABOUT _ "Americans" is an exhibition that sheds light on the nature of the American people's and American Indians' relationship. It insists that non-Native Americans and American Indians share an entangled history, and that in many ways, this history is the history of the United States.

Opened in January 2018, the "Americans" exhibition features nearly 300 objects, some of which are presented in these astonishing frameless display cases.

The Frameless Series has proudly earned us first place at the 2018 "Red Dot Design Award," a renown international design competition hosted annually in Germany.



MUSEUM OF INDIAN ARTS AND CULTURE



MUSEUM OF INDIAN ARTS AND CULTURE

Architect Living Designs Group Architects
Collection Ceramics, Basketry, Jewelry, Paintings, Textiles, Fashion

2022 Santa Fe, NM, USA



ABOUT _ "Here, Now, and Always" first opened in 1997. It covers the history of indigenous cultures of the Southwest, with a focus on New Mexico situated within MIAC's 8,400-square-foot Amy Rose Bloch Wing. The exhibition features more than 600 objects from the museum's extraordinary collection of ceramics, basketry, jewelry, paintings, textiles, fashion, and more.

New Mexico has a mild, arid, or semi-arid, continental climate, characterized by relatively large annual temperature and humidity fluctuations as well as a variable air quality index (AQI). To counter the damaging effect that such atmospheric conditions can have on organic artifacts, the acquisition of new airtight archival cases would provide safe microclimate environments to protect the sensitive collections. To this end, all display cases were designed with strict material tolerances to meet a specific air exchange rate. Each different case type has been tested for air leakage during the fabrication.





NATIONAL CENTER FOR CIVIL AND HUMAN RIGHTS

NATIONAL CENTER FOR CIVIL AND HUMAN RIGHTS

| | |
|--------------------|--------------------------------|
| Exhibition | Martin Luther King Jr. Gallery |
| Designer | Rockwell Group |
| Exhibit Fabricator | D&P Inc. |
| Collection | Papers, Books and Manuscripts |

2014 Atlanta, GA, USA

ABOUT _ The MLK Gallery at the National Center for Civil and Human Rights in Atlanta is a chapel-like space dedicated to Martin Luther King Jr. The gallery is meant to foster quiet reflection as visitors read and contemplate Dr. King's words.

Designed by Rockwell Group and completed in collaboration with D&P Inc, the MLK gallery features rotating exhibits of personal papers, displayed in beautiful archival cases built by Zone Display Cases, alongside a projection of the phrase "I Have a Dream" in 25 different languages.

CANADIAN MUSEUM OF NATURE

| | |
|------------|----------------|
| Exhibition | Bird Gallery |
| Collection | Taxidermy |
| Designer | Origin Studios |

2010 Ottawa, ON, CAN



ABOUT _ This project is a wonderful example for sustainability and durability. Produced and installed in 2010, the cases are still displaying, protecting, and highlighting the beauty of nearly 500 bird specimens in the permanent Bird Gallery at the Canadian Museum of Nature. Not only does the exhibit itself still look new and modern, but the cases are also still impeccable from the inside-out.

CANADIAN MUSEUM OF NATURE



NATIONAL MUSEUM OF NATURAL HISTORY

| | |
|--------------------|-------------------------------|
| Exhibition | David H. Koch Hall of Fossils |
| Designer | Reich + Petch |
| Exhibit Fabricator | D&P Inc. |
| Collection | Dinosaurs, Fossils and Bones |

2019 Washington, D.C., USA



ABOUT _ The David H. Koch Hall of Fossils - Deep Time, is a 31,000-square-foot exhibit that opened in 2019. The exhibition spans 3.7 billion years and urges visitors to draw connections across geological time scales. The museum spent over a decade brainstorming and crafting every inch of this exhibit.

Zone Display Cases was an important collaborator to the project, contracted to supply more than 30 gigantic cases, which actually consisted in over 100 different modules, to accommodate this truly impressive collection of ancient creatures.



THE FIELD MUSEUM

| | |
|-----------------------|--|
| Exhibition | Native Truths: Our Voices, Our Stories |
| Collection | Native American Art |
| Exhibit Design | The Field Museum |

2022 Chicago, IL, USA

ABOUT _ On display are 400 incredible objects from the museum’s historical collections, but also 50 contemporary Native American artworks. It is unusual for a natural history museum to display contemporary work, but the purpose was to forefront that native culture is contemporary and thriving, as well as rooted in history.

The project comprised of 18 climate-controlled archival cases, all of which had to meet the Field Museum’s extremely strict conservation guidelines. Due to the highly sensitive nature of the collections, all cases needed to provide a very low air exchange rate for humidity and pollutant control. In addition, all display case materials needed to be inert and approved before production.

AL SHINDAGHA MUSEUM

| | |
|-------------------|--|
| Exhibition | Perfume House |
| Designer | GSM Project |
| Collection | Perfume Applicators and Bottles, Raw Scent |

2018 Dubai, UAE

ABOUT _ Designed and built with GSM Project, the Perfume House is part of the Al Shindagha Historic District, a 25ha area situated on the northwest bank of the Khor. It was originally the historic center of Dubai in which Dubai’s ruling Sheikhs as well as famous traders used to live.

GSM was the first client to purchase our award-winning frameless cases for this very unique project.

The Frameless Series has proudly earned us first place at the 2018 “Red Dot Design Award,” a renown international design competition hosted annually in Germany.



reddot award 2018
best of the best



AL SHINDAGHA MUSEUM

zonedisplaycases.com

SOUTHERN UTE CULTURAL CENTER AND MUSEUM



SOUTHERN UTE CULTURAL CENTER AND MUSEUM

| | |
|---------------------------|---|
| Exhibit Design | West Office Exhibition Design |
| Exhibit Fabricator | Superior Exhibits & Design |
| Collection | Native Saddlebags, Children's Dolls, Clothing, Weapons of War and Baskets |
| Architect | Jones & Jones Architects |

2011 Ignacio, CO, USA

ABOUT _ The Southern Ute Museum in Ignacio is a Southwest cultural resource and regional highlight, designed by Seattle-based Jones & Jones Architects. The exhibits were designed in 2010 by West Office Exhibition Design and fabricated in collaboration with Superior Exhibits & Design.

Native saddlebags, children's dolls, clothing, weapons of war, baskets and other artifacts from the 19th century were among some of the items that were displayed and loaned to the tribe by the Smithsonian National Museum of American Indian.



ART MUSEUMS





NORTON MUSEUM OF ART

| | |
|-------------------|-------------------------------------|
| Architect | Foster + Partners |
| Designer | Matter Architecture Practice |
| Collection | European, American, and Chinese Art |

2019 West Palm Beach, FL USA



ABOUT _ The Norton Museum of Art is Florida's largest art museum. It has developed an internationally acclaimed collection of American, Chinese and European Art that now contains over 8,200 works. In 2019, the museum's new Kenneth C. Griffin Building, designed by renowned London-based architectural firm Foster + Partners, added 12,000 square feet of new gallery space.

Through seamless collaboration with Matter Architecture Practice, the exhibition designer, Zone responsively adapted to the Norton's budget constraints and demanding timeline. To this end, a large number of beautiful wall cases were installed throughout the Shapiro, Davis, Meyer, and Niblack galleries. Each stunningly highlights the beauty of the museum's collections.



DENVER ART MUSEUM

| | |
|-----------------------------|---|
| Exhibition | Latin American Art and Asian Art Galleries |
| Collection | Asian Art, Latin American Art and Art of the Ancient Americas |
| Exhibit Design | The DAM |
| 2021 Denver, CO, USA | |



ABOUT _ After more than three years of construction, not to mention the pandemic delays, the Denver Art Museum's \$175 million renovation got completed in the fall of 2021. Part of the major project was to restore and renovate the Martin Building, which would offer visitors access to 33,328 sq. ft. of new galleries and public spaces.

Zone Display Cases was contracted by the DAM to design, fabricate and install an impressive quantity of beautiful recessed wall cases, totaling no less than 675 linear feet of glass.



PEABODY ESSEX MUSEUM

| | |
|-------------------|--|
| Exhibition | Asian Export Art & American Decorative Arts |
| Architect | Ennead Architects |
| Collection | Paintings, Chinese Porcelain, Japanese Lacquer, Textiles, Silver, Sculptures, Costumes, Decorative Art, and Works on Paper |

2019-2021 Salem, MA, USA

ABOUT _ “Asian Export Art”, completed in 2019, features more than 200 works of art, including a liturgical vestment from the 1600s and a waistcoat from the 1740s, both featured in these elegant all-glass freestanding display cases. Also on display in a large 24-ft. case is the Treasures of Chinese Export Ceramics, one of the world’s foremost collections of Chinese export.

More recently and also on permanent exhibition, “American Decorative Art” spans four centuries of creative expression in the United States. The project, completed in 2021, includes beautiful large-size modern wall cases that blend discreetly into the walls of this newly-renovated gallery.





JORDAN SCHNITZER MUSEUM OF ART

| | |
|-----------------------|---|
| Exhibition | Myriad Treasures: Celebrating the Reinstallation of the Soreng Gallery of Chinese Art |
| Collection | Chinese Art, Textiles and Paintings |
| Exhibit Design | The Jordan Schnitzer Museum of Art |

2020 Eugene, OR, USA



ABOUT _ More than 100 works of art spanning four millennia of Chinese history are included in the inaugural display at the UO's Jordan Schnitzer Museum of Art.

Discover the two large display cases designed and fabricated with specific conservation requirements. One of them, a 10 ft. tall by 16 ft. long narrow double-sided freestanding case, displays two Manchu silk coats with wonderful embroidery and selected painted details.

The second, a large 10 ft. tall and 22 ft. long L-shaped wall corner case, serves to display 3 hanging scrolls from the Ming Dynasty: Bodhisattvas of the Sun and Moon and 12 Guardian Generals, Living a Long Life as Pine Trees and Cranes and Landscape.



MUSÉE NATIONAL DES BEAUX-ARTS DU QUÉBEC



MUSÉE NATIONAL DES BEAUX-ARTS DU QUÉBEC

| | |
|-------------------|---------------------------|
| Exhibition | Tribute to Rosa Luxemburg |
| Collection | Paintings |

2016 Quebec, QC, CAN

ABOUT _ The "Tribute to Rosa Luxemburg" is a unique masterpiece made of 30 paintings that measures more than 130 feet long.

Presented at the Musée National des Beaux-Arts du Québec (MNBAQ), this impressive piece of art hangs behind ultra-clear invisible and anti-reflective security glass. It shines under a sophisticated integrated LED lighting system to bring out the vivid colors of this narrative fresco made in 1992 by Jean-Paul Riopelle, using aerosol spray.



UNIVERSITIES & LIBRARIES

ALASKA STATE LIBRARY ARCHIVES MUSEUM



ALASKA STATE LIBRARY ARCHIVES MUSEUM
The Beauty of Nature Through Native
Woodcarving: A Masterpiece Carved Totem
Pole from the Museum.



ALASKA STATE LIBRARY ARCHIVES MUSEUM



ALASKA STATE LIBRARY ARCHIVES MUSEUM

| | |
|-------------------|--|
| Architect | ECI/Hacker Architects |
| Design | ECI/Hacker Architects |
| Collection | Various Historical Artifacts from Alaska and Indigenous People |

2016 Juneau, AK, USA



ABOUT _ Designed by ECI/Hacker Architects, the state-of-the-art, 175,000 square-foot two-story structure over basement-level parking, houses all three entities under one roof. It is an icon in Alaska's cultural landscape in downtown Juneau.

During the construction phase, in 2015-2016, Zone Display Cases was commissioned to design, build, and install nearly a hundred museum quality archival display cases for the SLAM project, an acronym that stands for State Library, Archives and Museum, in Juneau, Alaska.



LILLY LIBRARY, INDIANA UNIVERSITY

| | |
|-------------------|--|
| Collection | Rare Books, Manuscripts and Literary Artifacts |
| Design | IKD |
| Architect | Kovert Hawkins Architects |

2021 Bloomington, IN, USA



ABOUT _ Located in the heart of IU's Bloomington campus, the Lilly Library holds more than 450,000 rare books, 8.5 million manuscripts, the world's largest collection of mechanical puzzles, and 150,000 pieces of music sheets.

Zone Display Cases was mandated to design and install magnificent wooden table display cases and built-in wall display cases dedicated to exhibiting historical pieces of great importance.

This project posed challenges on several levels. The recessed wall cases with gigantic 10-ft. wide doors incorporated a variety of rather unusual elements, particularly with the lighting and shelving systems, in an effort to maximize the flexibility of the display cases.



GEORGIA UNIVERSITY

| | |
|---------------------------|---|
| Exhibition | Hargrett Rare Book & Manuscript Library |
| Design | Haley-Kohler |
| Exhibit Fabricator | 1220 Exhibits Inc. |
| Collection | Books, Manuscripts, Photographs, Maps and Broadside |

2019 Athens, GA, USA



ABOUT _ Completed in 2012, this project was for the newly renovated Hargrett Rare Book & Manuscript Library at the University of Georgia, in Athens. 40 incredible table cases were built through unique teamwork with the Tennessee-based 1220 Exhibits Inc.

Haley-Kohler, the project designers, had a very precise vision with rigid specifications for beautiful, flawless millwork and modern climate control.

The Hargrett Library is a leading repository on Georgia history and culture. It holds 200,000 volumes in its rare book and Georgiana collections, 6 million pages of historical manuscripts and photographs, along with maps, broadsides, and UGA archives and records.

The project includes a magnificent 14-foot-long table case with a sophisticated hydraulic opening mechanism, which displays the original signed manuscript of the permanent constitution of the Confederate States of America, adopted on March 11, 1861.

HILL MUSEUM AND MANUSCRIPT LIBRARY



HILL MUSEUM AND MANUSCRIPT LIBRARY

Collection Bibles, Books, and Manuscripts
Design The Hill Museum

2017 Collegeville, MN, USA

ABOUT _ The Saint John's Bible is a modern manuscript commissioned by St. John's Abbey University. It is a monumental work that is almost two feet by three feet wide when opened. It is currently unbound, and it took twenty-three artists and 15 years to complete this one single work of art.

The goal for Zone Display Cases was to create a unique and challenging mounting system to display this unbound manuscript in the new gallery. The gallery features twenty-eight folios at one time. The system needed to allow them to change those folios and to display the unbound folios as if they were a floating open book. The gallery has 1,653 square feet of floor space and is located in the lower level of the library. On exhibit are the original folios from the seven volumes of The Saint John's Bible.

YALE UNIVERSITY ART GALLERY

Design WeatherstonBruer Associates
Collection Art Collections Made of Ceramic, Stone, Silver, Glass and Wood

2015 West Haven, CT, USA



ABOUT _ The Margaret and Angus Wurtele Study Center is a storage facility that displays approximately 33,000 three-dimensional objects, increasing the accessibility of the Gallery's collections for teaching, scholarly research, conservation, and scientific analysis.

The goal of this project was to provide the best open access storage environment for a whole range of materials in the collection of the Yale University Art Gallery. Yale was looking for the highest standards in conservation and preservation, and for storage solutions that were highly accessible to the students at Yale and students visiting the gallery from all around the world.

HARVARD MUSEUM OF NATURAL HISTORY

On April 1, 2016, the new glass cases installed and built by Zone Display Cases were opened to the public. The collaboration with Harvard resulted in a fully functional and efficient display case for the new exhibit. The Glass Flowers collection was commissioned by Harvard Natural History Museum Director George Coussids and designed by Boston architect Elizabeth C. and Mary Lee Ware. The small display represents a fraction of the 4,400 models making up the Ware Collection of Glass Models of Plants. Please return on May 27, 2016 when we will begin the newly renovated Glass Flowers gallery.



HARVARD MUSEUM OF NATURAL HISTORY

| | |
|-------------------|--|
| Exhibition | The Ware Collection of Blaschka Glass Models of Plants |
| Collection | Blaschka Glass Flowers |
| Design | The Harvard Museum of Natural History |

2016 Cambridge, MA, USA

ABOUT _ The Glass Flowers, formally The Ware Collection of Blaschka Glass Models of Plants, is a famous collection of highly realistic glass botanical models at the Harvard Museum of Natural History. Approximately 4,400 individual glass models comprise the collection.

These modern climate-controlled cases, entirely designed and built by Zone, are supplied with vibration-free surfaces and opening mechanisms. The cases rest on beautiful hardwood bases that match the existing rustic feel of their current gallery.



ATTRACTIONS



WALT DISNEY IMAGINEERING



WALT DISNEY IMAGINEERING
"Ancient Resonance" Dress from Fashion
Designer Loren Aragon (Acoma Pueblo)



WALT DISNEY IMAGINEERING



WALT DISNEY IMAGINEERING

| | |
|-------------------|---|
| Exhibition | Creating Tradition: Innovation and Change in American Indian Art at the American Heritage Gallery |
| Collection | Historical 3D Artifacts |
| Design | Walt Disney Imagineering |
| 2018 | Orlando, FL, USA |



ABOUT _ “Creating Tradition: Innovation and Change in American Indian Art” showcases authentic, historical Native artifacts alongside contemporary works of American Indian art—demonstrating examples of cultural traditions which have been handed down through generations.

This collection is made possible through the collaboration of the Museum of Indian Arts and Culture (MIAC) in Santa Fe, New Mexico, and the Smithsonian National Museum of the American Indian (NMAI) in Washington, D.C.

The display cases are exceptionally high quality, and the woodwork adds richness to the design. In addition, and due to the high humidity levels in Florida and the substantial traffic in Epcot museums, the display cases must include active microclimate generators, which are discreetly concealed within the bases and easily accessible to the museum staff.

TOYOTA EXPERIENCE CENTER

EVOLUTION
The process of discovery and innovation has been a constant theme in the history of the Toyota Motor Corporation. In 1937, the company's first mass-produced car, the Model A, was introduced. It was a significant milestone for Toyota, as it marked the beginning of the company's journey into the world of mass production. The Model A was a small, four-door sedan that was designed to be reliable and affordable. It was a car that was built for the people, and it was a car that was built to last. The Model A was a car that was built with a focus on quality and craftsmanship. It was a car that was built with a focus on innovation and technology. The Model A was a car that was built with a focus on the future. It was a car that was built to be a part of the Toyota legacy. The Model A was a car that was built to be a part of the Toyota story. The Model A was a car that was built to be a part of the Toyota experience. The Model A was a car that was built to be a part of the Toyota future.



TOYOTA EXPERIENCE CENTER

| | |
|---------------------------|---|
| Designer | Corgan |
| Exhibit Fabricator | Group Delphi |
| Collection | Automobile-related collections, including racing artifacts, photographs, and trophies |

2019 Plano, TX, USA

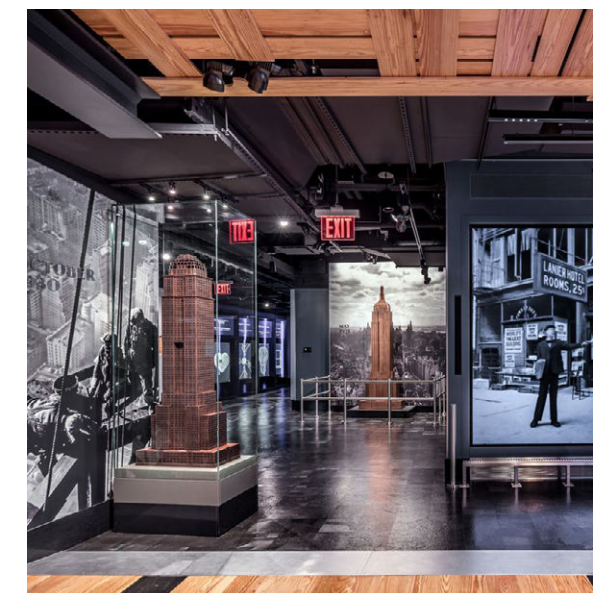
ABOUT _ The new 44,000-square foot Toyota Experience Center (TEC) is filled with relics of the automaker's past. In addition to showcasing old cars, the new attraction is designed to showcase Toyota's past, present and future, to both team members and guests.

Visitors can enjoy a series of interactive exhibits and eye-catching displays, created to honor the people who are responsible for the company's success. Completed in partnership with Group Delphi, Zone Display Cases' scope was to fabricate a series of freestanding wall cases with shelving to display a variety of automobile-related collections.

EMPIRE STATE BUILDING

| | |
|---------------------------|------------------------------|
| Designer | Thinc Design |
| Exhibit Fabricator | Kubik Maltbie |
| Collection | Empire State Building Models |

2019 New York, NY, USA



ABOUT _ The Empire State Building Museum offers multiple hands-on exhibitions highlighting the unique significance and history of the different parts of the famous building. As visitors walk through the exhibit, they have the opportunity to see back in time to the history of the skyscraper's construction and the extraordinary construction process that made it unprecedented for its time.

As part of a two-phase project, the 10,000-square-foot new galleries include large-scale models of the Empire State Building, each brilliantly displayed in these astonishing and modern frameless display cases.

GREEN BAY PACKERS HALL OF FAME AND MUSEUM



GREEN BAY PACKERS HALL OF FAME AND MUSEUM

| | |
|--------------------|-----------------------------|
| Design | Rockwell Group |
| Exhibit Fabricator | 1220 Exhibits |
| Collection | Green Bay Packers Artifacts |

2015 Green Bay, WI, USA



ABOUT _ The 15,000 square foot, two-level Green Bay Packers Hall of Fame is conveniently located on the main floor of the Lambeau Field Atrium. A tribute to the greatest story in sports.

The facility uses the latest technology, enhanced interactive displays, and a treasure trove of artifacts, to educate and inspire visitors about the rich history of the Packers, as well as the teams of today. This project was completed in 2015, in partnership with 1220 Exhibits.

This project included several conservation cases of all shapes and sizes to display various archives from the Packers. To be noticed is this epic curved trophy case, measuring 25 feet long and displaying trophies from the Packers' 13-Time World Championship, including four Lombardi trophies.



FORD EXPERIENCE CENTER

| | |
|-------------------|--|
| Architect | Ghafari Associates |
| Collection | Artifacts from the Henry Ford Museum Collections |

2021 Dearborn, MI, USA

ABOUT _ The FXC showcases the future of automobiles, but it's grounded in Ford's history. The 90,000 sq. ft. new space speaks to the company's legacy through its use of museum-quality materials, including a series of sophisticated frameless cases supplied with stylish marble bases. The display cases' design provides ingenious, concealed, and easy access for temporary exhibits featuring artifacts from the Henry Ford Museum.



BANFF CENTRE FOR ARTS AND CREATIVITY

| | |
|-------------------|-----------------------|
| Collection | Native American Masks |
| Design | Glenbow Museum |

2014 Banff, AB, CAN

ABOUT _ Banff Centre for Arts and Creativity, formerly known as The Banff Centre, is a learning organization built upon an extraordinary legacy of excellence in artistic and creative development. The center has grown to become the global organization leading in arts , culture , and creativity across dozens of disciplines.

Although this was a simple project, the critical aspect of this project was to provide highly-secured museum quality wall cases to protect and display sensitive native American masks in a high traffic educational environment.





"I have always been convinced that the most important asset of our company is our employees, and their incredible willingness to collaborate on our projects with creativity, audacity and open-mindedness. I encourage an environment where respect, loyalty and fun are paramount values. For more than 35 years, our passionate, inspired and committed team is the reason to our success. Today, more than ever, our dedication and expertise allow us to remain leaders in the design and manufacture of museum quality display cases."

LOUIS ST-GELAIS
President & CEO

zone display cases

660 rue de l'Argon
Quebec, QC
G2N 2G5, Canada

1.418.841.4004

zonedisplaycases.com
info@zonedisplaycases.com





Zone Display Cases

THE ART OF CREATING, BEYOND GLASS AND STEEL